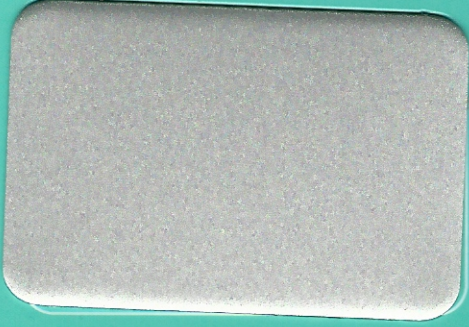
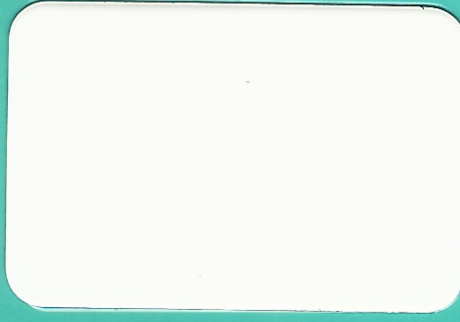


vetrina
composite panel

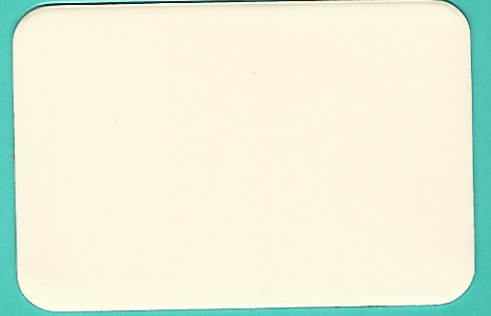
plus | *class*
RENK | KARTELASI
COLOR CHART



VPlus 1901 - VClass 1701
Metalik Silver / Silver Metallic



VPlus 1902 - VClass 1702
Beyaz / White



VPlus 1903 - VClass 1703
Krem / Cream



VPlus 1904 - VClass 1704
Siyah / Black



VPlus 1919 - VClass 1719
Kırmızı / Red



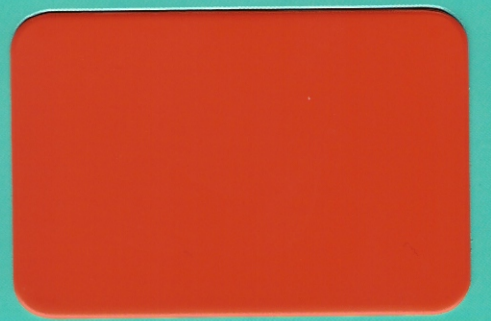
VPlus 1917 - VClass 1717
Ultramarine Mavi / Ultramarine Blue



VPlus 1911 - VClass 1711
Trafik Beyaz / Traffic White



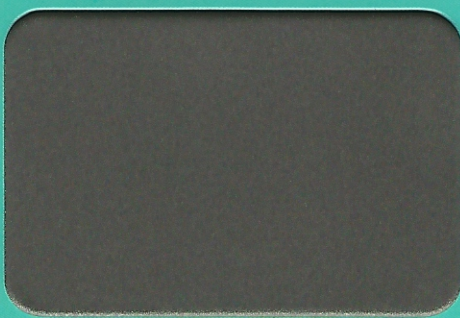
VPlus 1918 - VClass 1718
Bordo / Claret Red



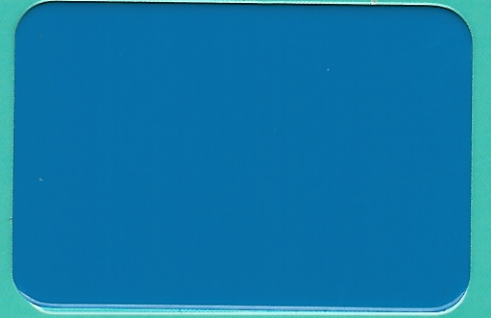
VPlus 1920 - VClass 1720
Turuncu / Orange



VPlus 1909 - VClass 1709
Metalik Koyu Gri / Dark Grey Metallic



VPlus 1910 - VClass 1710
Metalik FÜme / Dark Grey



VPlus 3911 - VClass 3711
Pantone Mavi / Pantone Blue



VPlus 3912 - VClass 3712
Parlak Kırmızı / Bright Red



VPlus 1915 - VClass 1715
Turkuaz / Turquoise



VPlus 1905 - VClass 1705
Bronz / Bronze



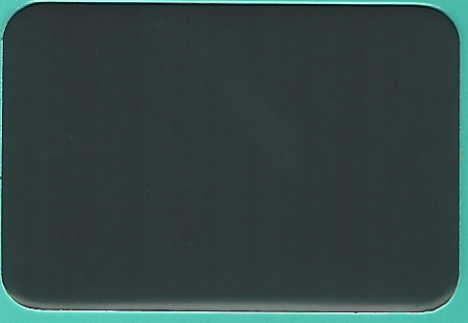
VPlus 3914 - VClass 3714
Yeşil / Green



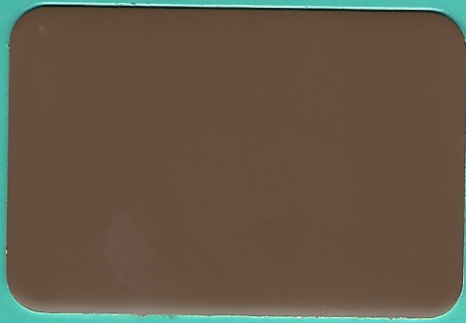
VPlus 1916 - VClass 1716
Sarı / Yellow



VPlus 1906 - VClass 1706
Bakır / Copper



VPlus 1921 - VClass 1721
Antrasit Gri / Anthracite Grey



VPlus 1922 - VClass 1722
Açık Kahve / Pale Brown



VPlus 1907 - VClass 1707
Metalik Sarı / Yellow Metallic



VPlus 2929
Ayna / Mirror



VPlus 2930
Sarı Ayna / Yellow Mirror



VPlus 3916
İnce Altın Meşe / Golden Oak Fine Wood



VPlus 3917
Kalın Altın Meşe / Golden Oak Line Wood

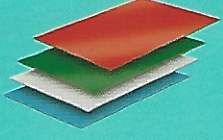


VPlus 3915
Kalın Maun / Mahogany



VPlus 3921
Teak / Teak

POLYESTER COATING



Yüksek kaplama alanına sahip, sertlik ve esneklik arasında iyi bir denge sunan polyester boya, genellikle inşaat uygulamalarında ve reklam sektöründe kullanılmaktadır. Polyester boya, ön yüzey hazırlık işlemi görmüş sac ve alüminyum üzerine uygulanan boya tekniğidir. Asit katalizörlü ve melanimle çapraz bağlanan doymuş polyester reçineleri; dolgular, solventler ve performans arttırıcılar içermektedir.

High coverage polyester coating generally used in construction applications and advertising industry, provides a good balance between stiffness and flexibility. Polyester is a coating technique applicated on the surface of pre-coated aluminium or sheet metal. Acid -catalyzed cross-linked saturated polyester resins include fillers, solvents and performance enhancers.

- Vetrina kompozit panel ürünleri reklam sektörüne yönelik olup dış cephe uygulamaları için uygun değildir.
- Vetrina composite panel products are used in advertising industry and are not suitable for outdoor applications.
- Özel renk paneller üretilebilir. Minimum sipariş miktarı 1.000 m² dir.
- Special color panels can be produced. The minimum order amount must be 1.000 m².
- Farklı zamanlarda üretilen paneller arasında ton farkları olabilir. Renk bütünlüğü sağlayabilmek için toplam ihtiyacınızı bir seferde almanızı tavsiye ederiz.
- There might be small color differences in panels produced in differents lots. Therefore we recommend you to place your orders at one time.



zahit[®]
ALUMİNYUM SAN. VE TİC. A.Ş.

Hacı Sabancı Organize Sanayi Bölgesi
Oğuz Kağan Köksal Cad. No:5
Sarıçam - Adana / Türkiye

T : +90 (322) 394 35 02
F : +90 (322) 394 30 48

zahit@zahit.com.tr